



Trinity Avenue, Enfield, EN1
Chain Free £499,995 Freehold

Anthony Webb
ESTATE AGENTS

Trinity Avenue, Enfield, EN1

A 1930s built three bedroom terrace house with a fantastic 105ft rear garden offered on a CHAIN FREE basis. The property requires modernisation and has great potential to extend to rear and into the loft space to create a wonderful family home.

Trinity Avenue is a popular residential turning in the heart of Bush Hill Park a few minutes walk to local shops and the mainline station into London Liverpool Street. Enfield Town shopping centre is also within easy reach and the A10 provides excellent road links into London and beyond.

Front garden • Hallway with original style front door and stained glass windows • Through lounge with bay window and door to lean to • Galley kitchen • Lean to with doors to garden • First floor landing with access to loft space • Two double bedrooms with fitted wardrobes • One single bedroom • Modern bathroom • Gas central heating • Partial double glazing • Mature rear garden measuring 105ft x 19ft.

Enfield Council Tax band E

- Three bedroom house
- 1930s built
- Through lounge
- Galley kitchen
- Lean to
- Chain free
- Close to station
- Front and rear gardens





Trinity Avenue Enfield EN1 1HT

Tenure: Freehold
Gross Internal Area: 1008.00 sq ft

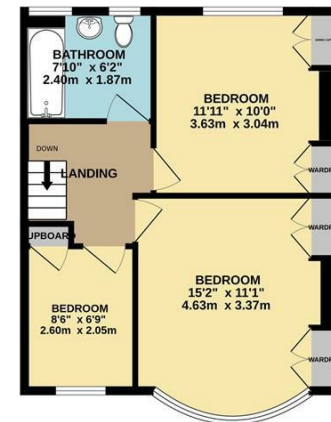


Energy Efficiency Rating		Current	Potential
Very energy efficient - lower running costs			
(92 plus) A			90
(81-91) B			
(69-80) C			
(55-68) D		54	
(39-54) E			
(21-38) F			
(1-20) G			
Not energy efficient - higher running costs			
England & Wales		EU Directive 2002/91/EC	
Environmental Impact (CO ₂) Rating		Current	Potential
Very environmentally friendly - lower CO ₂ emissions			
(92 plus) A			
(81-91) B			
(69-80) C			
(55-68) D			
(39-54) E			
(21-38) F			
(1-20) G			
Not environmentally friendly - higher CO ₂ emissions			
England & Wales		EU Directive 2002/91/EC	

GROUND FLOOR
552 sq.ft. (51.3 sq.m.) approx.



1ST FLOOR
455 sq.ft. (42.3 sq.m.) approx.



TOTAL FLOOR AREA: 1008 sq.ft. (93.6 sq.m.) approx.
Whilst every attempt has been made to ensure the accuracy of the floorplans contained herein, measurements of doors, windows, rooms and any other items are approximate and no responsibility is taken for any error, omission or mis-statement. This plan is for illustrative purposes only and should be used as such for any prospective purchaser. The services, systems and appliances shown have not been tested and no guarantee as to their operability or efficiency can be given.
Made with Metrepx ©2023

Property particulars as supplied by Anthony Webb Estate Agents are set out as a general outline in accordance with the Property Misdescriptions Act (1991) only for the guidance of intending purchasers of lessees, and do not constitute any part of an offer or contract. Details are given without any responsibility, and any intending purchasers, lessees or third parties should not rely on them as inspection or otherwise as to the correctness of each of them. We have not carried out a structural survey and the services, appliances and specific fittings have not been tested. All photographs, measurements, floor plans and distances referred to are given as a guide only and should not be relied upon for the purchase of carpets or any other fixtures statements or representations of fact, but must satisfy themselves by or of fittings, gardens, roof terraces, balconies and communal gardens as well as tenure and lease details cannot have their accuracy guaranteed for intending purchasers. Lease details, service ground rent (where applicable) are given as a guide only and should be checked and confirmed by your solicitor prior to exchange of contracts. no person in the employment of Anthony Webb has any authority to make any representation or warranty whatever in relation to this property.

348 Green Lanes, Palmers Green, London N13 5TJ
020 8882 7888
palmersgreen@anthonywebb.co.uk
anthonywebb.co.uk

Anthony Webb
ESTATE AGENTS